

Revaluing Enterprise Education in a Changing World

Gary C Wood¹, Princy Johnson² & Ceri Batchelder¹

¹University of Sheffield, ²Liverpool John Moores University

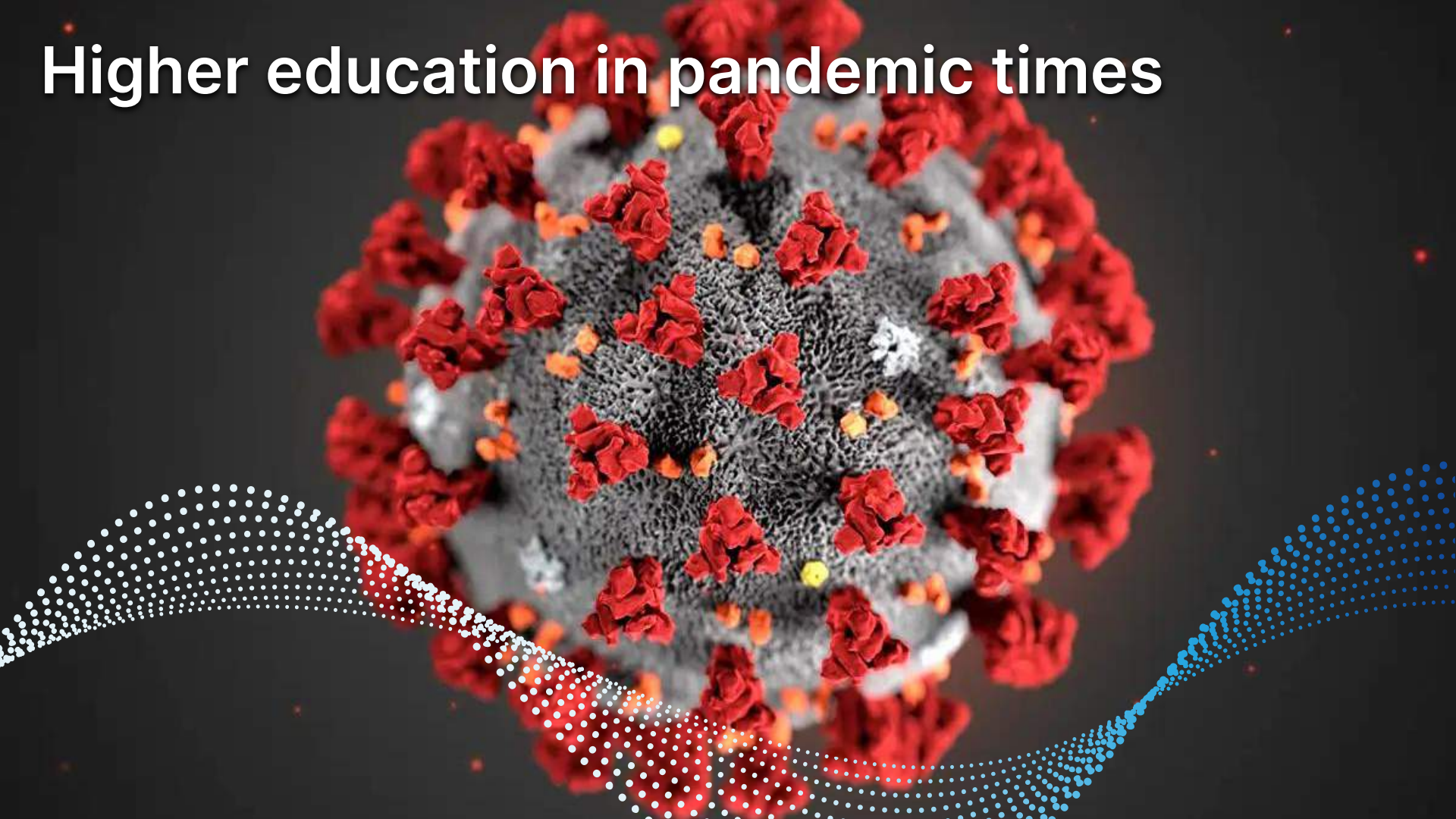


The
University
Of
Sheffield.



LIVERPOOL
JOHN MOORES
UNIVERSITY

Higher education in pandemic times



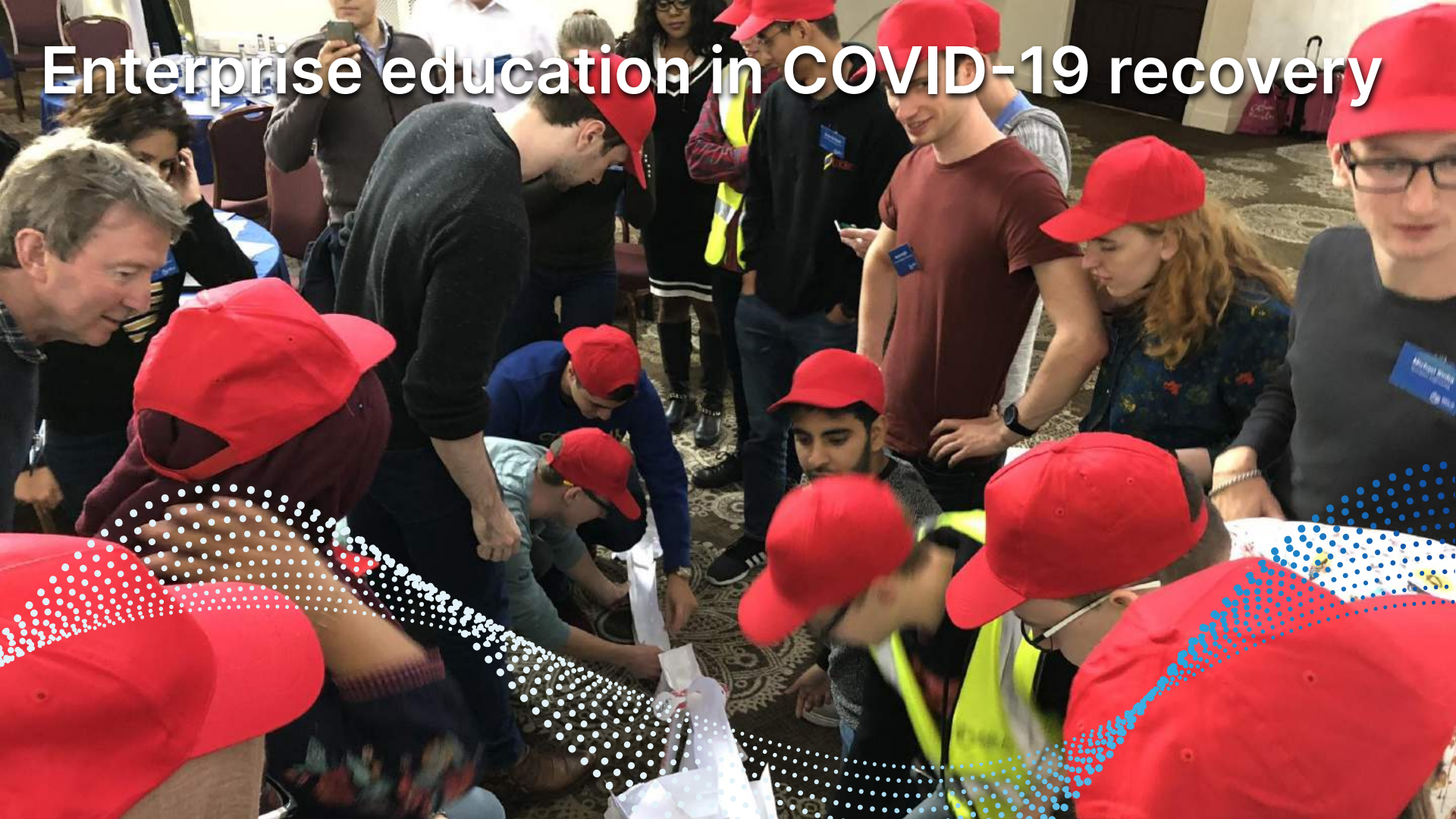
How do we effect cultural change?



Enterprise education conundrum



Enterprise education in COVID-19 recovery



Revaluing enterprise

A close-up photograph of several interlocking metal gears. The gears are made of a dark, textured metal, possibly steel, and show signs of wear. The lighting is dramatic, with strong highlights on the teeth and deep shadows in the gaps. A decorative graphic consisting of a series of small, light blue dots forms a wavy, curved line across the bottom right portion of the image, starting from the left edge and ending near the bottom right corner.

Teaching Excellence Framework



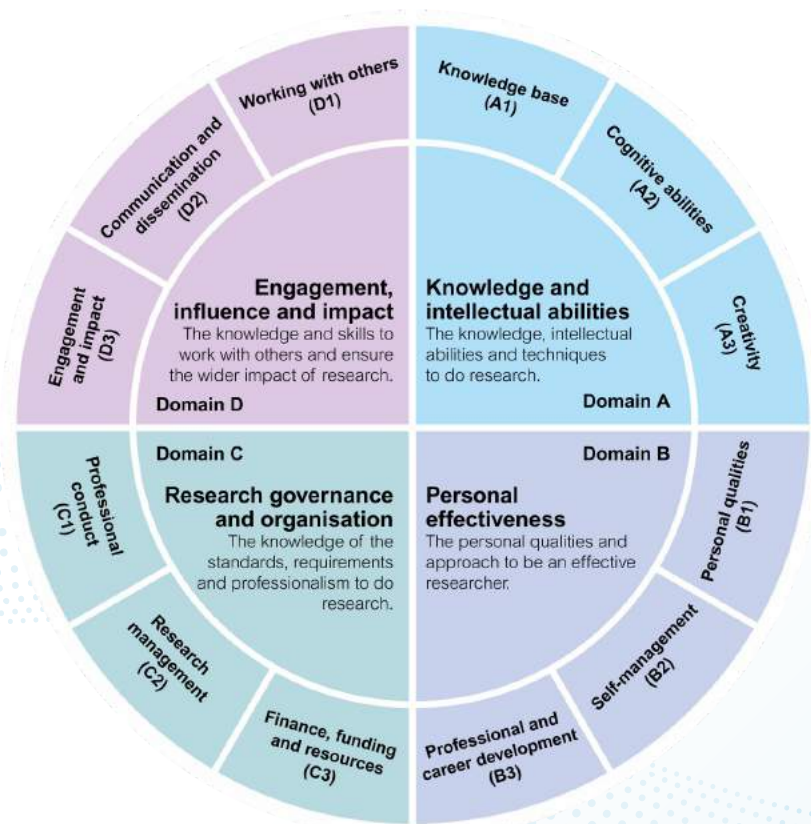
TEF and Enterprise



Research Excellence Framework



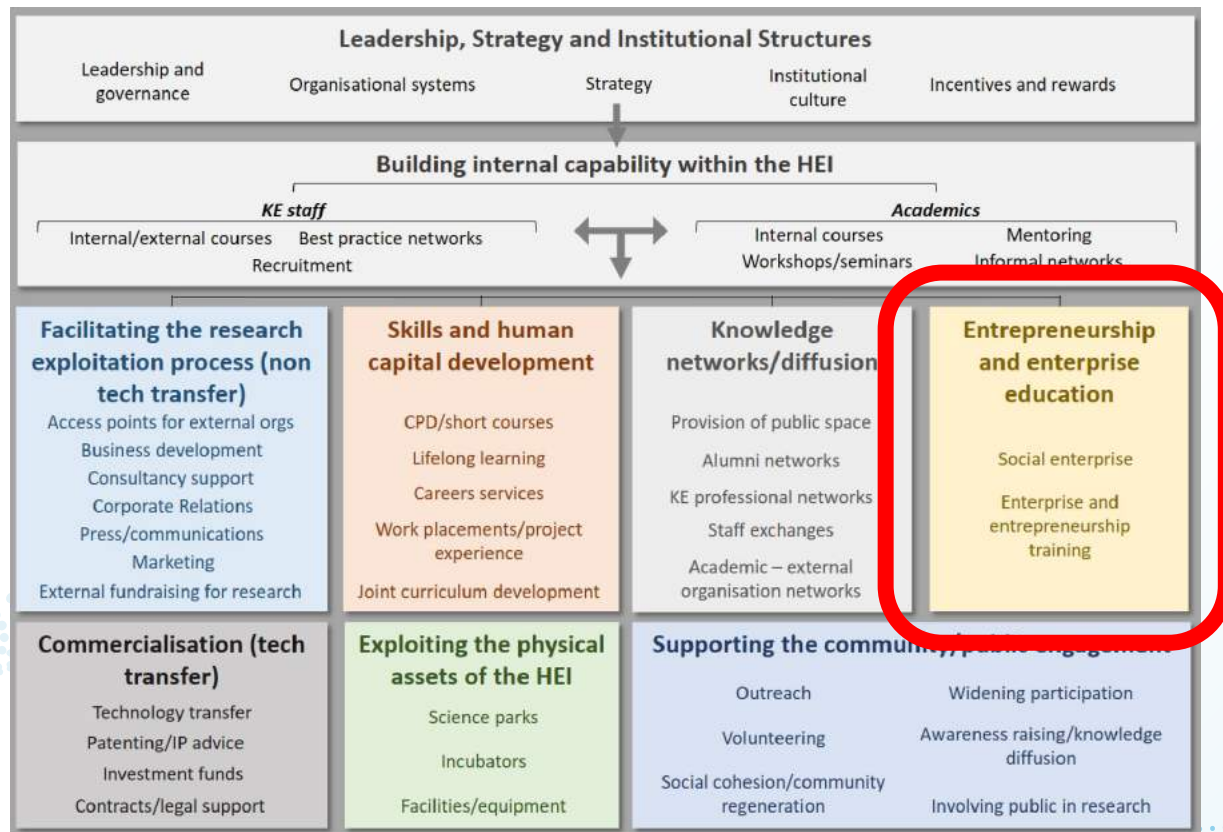
REF and Enterprise



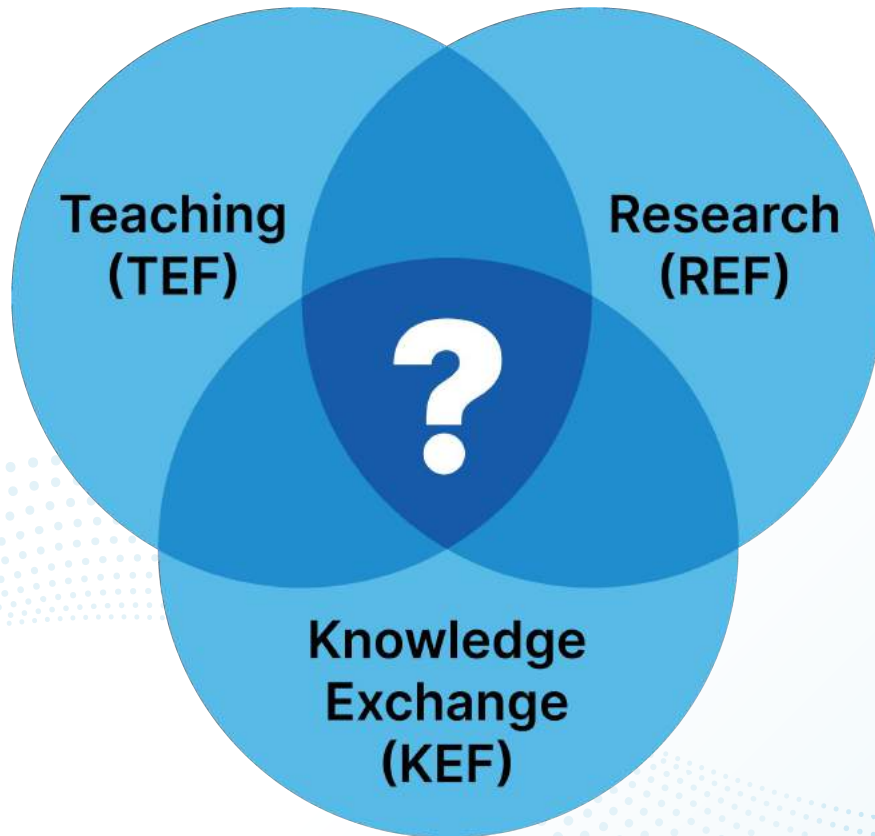
Knowledge Exchange Framework



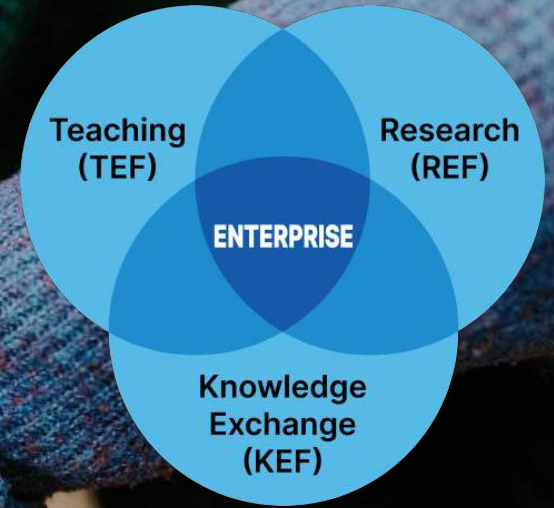
KEF and Enterprise



Bringing the 3EFs together



Enterprise at the Intersection



What skills are at the centre?



It's not just theoretical!



Have you got any good examples?

Think about:

- Embedded enterprise in the curriculum
- Extra- or co-curricular activities
- External engagement (industry, public, communities)
- Staff-student research collaborations
- ...

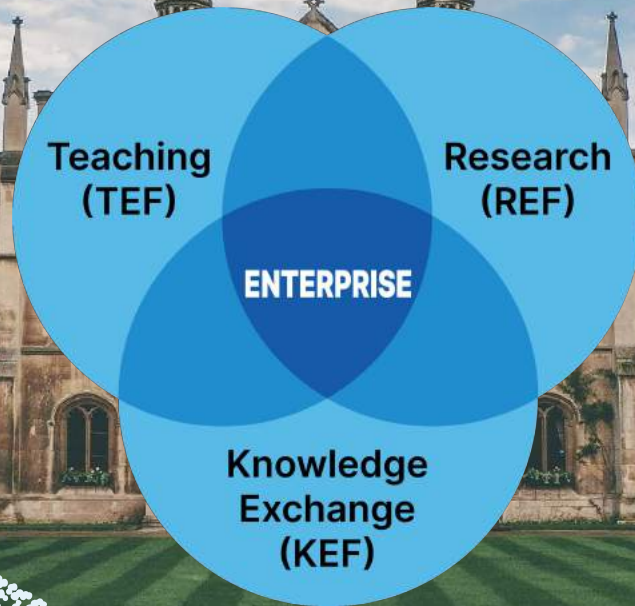


Who could you consult?

- Heads of professional services
- Enterprise/entrepreneurship staff/student champions
- Industry collaboration PIs
- Senior leaders
- ...



Conclusion



Call to action

