

Enterprising / Entrepreneurial journeys -  
what's yours?

*International Entrepreneurship Educators  
Conference 2015*

Become a  
**graduate with more**

## The Research Team



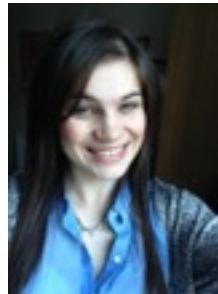
*Charmaine Myers*  
(curricular)



*Liam Felton*  
(assistant researcher)



*Hannah Lister*  
(extra-curricular)



*Roberta Smith*  
(graduant assistant  
researcher)



*Caroline Nouvellon*  
(co-curricular and  
extra-curricular)



*Ridita Ali*  
(assistant researcher)

Become a  
**graduate with more**

Part I

*Plot your enterprising / entrepreneurial journey!*

Become a  
**graduate with more**

## Our definitions of 'enterprise' and 'entrepreneurship'

*Enterprise/ing - to be enterprising is to possess a set of skills and attributes that can be applied to everyday life and situations for the benefit of both the economy and society as a whole.*

*Entrepreneur/ship - Entrepreneurs apply enterprising skills and attributes to the start-up and running of businesses after recognising an opportunity to exploit a gap in the market, either for commercial gain or as a social enterprise.*

Become a  
**graduate with more**

Name of University

Sheffield Hallam University

Name of Initiative

Exploring Self-Employment (Four 2 hour workshops)

Curricular / Extra-curricular / Co-curricular - please circle

Please give a brief description of the initiative below:

These workshops are the revised version of the original MAC self-employment workshops which formed part of our research.

The emphasis is now placed on providing students with the opportunity to identify, develop and articulate their **enterprising skills** through a range of appropriate activities.

They will also learn how these skills are essential for the self-employed individual, as well as being highly valued by employers.

Skills such as: team work; creativity & innovation; project management; influencing / negotiating; leadership; communication; planning & organisation etc...

**Part II**

*Our research*

Become a  
**graduate with more**

**Part III**

*What are the different enterprise/  
entrepreneurial initiatives at your institution?*

*Are your initiatives curricular/ extra curricular or  
co-curricular?*