
IN PARTNERSHIP WITH





Session Overview

- Introduce the Network and the Team
- Discuss What We Have Done & What We Would Like to Do
- Have a Go – with the MOOC materials
- What We Might All like to See Moving Forward
- Creating the Network & Future Plans





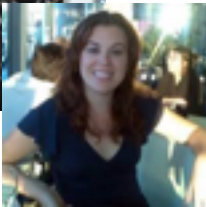
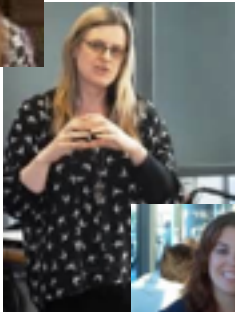
A Bit About Us...

Why?

1. A response to Lord Young's Report, calling for *"a lifelong experience of enterprise in education"*
2. Better Engagement between HE & FE
3. How Can We Pass on What We've Learnt & What Can We Learn from Others' Experiences? How Can We Create a Community! Teacher Network and Free Resources

What a Great Research Project!...

1. Find Out More About Communities of Practice
2. How Students & Teachers Engage with Enterprise Education





What This Looked Like as a Pilot

Specifically Designed Massive Open Online Course (MOOC) for 16-18 Year Olds to Learn About the Fundamentals of Starting a Business

University of Leeds' Partnership with FutureLearn – an online platform providing *free* MOOCs

1 Pilot Study in Collaboration with 2 Schools

- Bradford Girls Grammar School – all Year 12s (100+)
- Horsforth School – Year 12 Business Studies Students (30)

What We Found Was Fascinating...But First





Let's Have a Go!

Here's What it Looks Like on FutureLearn:

<https://www.futurelearn.com/courses/starting-a-business/todo/819>

IN PARTNERSHIP WITH





We'd Like to Hear From You What do you Think?

Have You Experienced a MOOC before?
Used in Teaching?

What Might the Barriers & Enablers be: For Students? For You?





What We Found

Teachers Will Use Resources Differently – in-curricular (EdExcel, AQA, OCR) and extra-curricular

Technology Can Be a Nightmare

Students' Were Considering New Possibilities

Students' Don't Yet Fully Grasp Online Can be a Learning Space

Students' Don't Like to Comment with Teachers & +20s around...





What Can We Do As a Network?

We would like to hear from you at our next Teacher Network Meeting (Oct/Nov)! –

What:

- Issues/Challenges to Discuss
- Calls to Action
- You'd Like to See & Engage with
- Other Things We Can Offer (e.g. Enterprise Day)



September 2015:

New Iteration of the Online Course

- **“Private” – only UK FE Schools & Colleges**
 - Email your Interest with Excel: Student Email Addresses (nothing else needed)
 - We Send to FutureLearn to Create Unique Code & Email to that address
 - Student Follows Link from that Email, Signs up as a FutureLearn Learner & Is Ready to Go!
- **Want to Get Involved as a Teacher?**
We're Looking for Research Collaborators...

FURTHER INFORMATION &
For FE SIGN-UP
SEPT 2015

Add your details to our
SIGN UP SHEET

Contact: Email Emilee at:
enterprise@leeds.ac.uk

IN PARTNERSHIP WITH

